



Nonprofit Org.
U.S. Postage Paid
Permit #1609
Chico, CA, 95928

Centerville School Bell

Postal Customer
Nimshew Stage
Chico, CA 95928

Centerville
Recreation & Historical Association
13548 Centerville Road

May 2022



FUN FOR ALL
The
49er Faire!

Pancake Breakfast
for the Covered Bridge
Sunday June 5th
8am to 11am

Sunday June 5th
9am to 3pm



The 57th annual pancake breakfast will be held from 8 to 11am, Sunday, June 5th at the Covered Bridge site. Come join in to enjoy Sheriff Honea's famous pancakes with trimmings, raffle prizes, conversations with friends and neighbors, and the beauty of Butte Creek. Then drive up the road to the famous 49'er Faire at the Centerville School.

Come and Enjoy
Arts and Crafts
Live Music
Food, Wine and Beer
Gold Panning
Plant and Gift Sale

The Colman Museum is Open
Saturdays & Sundays 1-4 pm
Come by for a visit & bring friends
and family!

Free Parking
Colman Museum and Schoolhouse
13548 Centerville Road, Chico

PLANT SALE PREPARATION

On a beautiful April Day a dozen or so volunteers created succulent masterpieces to be sold at this years fair. Get to the fair early for best selection!

A Big Thank You to this years volunteers and planting material donors.



PIE MAKING

A group very talented bakers got together and made pies that will frozen and then fresh baked for the Forty Niner Fair kitchen. All your favorites...Apple, Cherry, Black Berry, Peach and Walnut..early bird gets the best pie selection!!



All of the proceeds from the 49er Faire go directly to the upkeep of our valuable museum and schoolhouse. Our most pressing project at the moment involves deck repair. It's time to replace parts of our historic schoolhouse wrap around deck in order to maintain a safe environment for our local community activities and visitors to the museum.

FAIRE DONATIONS NEEDED

Vintage Store

If you are interested in donating gently used or homemade items for our Vintage Store we will welcome them the week prior to the faire. Contact Julia at (530)521-8563

Gift Sale

If you'd like to donate a new and wonderful item for our Gift Sale, please bring those items to the schoolhouse the week prior to the sale or contact Julia at (530)521-8563.

Country Store

The country store will be a bit different this year. It'll feature bagged cookies, whole pies, breads (anything that can be sold as a unit, not served individually) fresh local eggs, cut flowers, homemade candies, jams, jellies and preserves. If you have any of these things to donate, please call Sarah Adams at (530)519-3993 or email sarah@chicochai.com to coordinate.

HELPERS NEEDED FOR THE FAIRE

Set-up on Saturday, June 4th , 9am to ...

Faire Day Parking, Kitchen/Food, Drink Booth. Shifts Available from 9am to 11, 11 to 1, 1 to 3pm

Clean-up at 3pm

Please call Julia to schedule a time that would work for you. (530)521-8563

BUTTE CREEK WILDLIFE CORNER

By Kevin McCormick

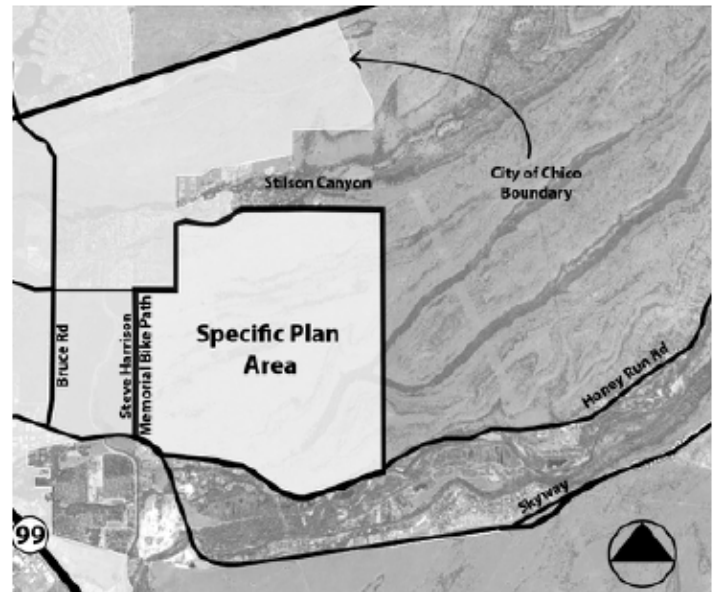
Birds, Birds, Birds, and Salmon! The Spring nesting season is well on its way. We have lots of Acorn Woodpeckers and Starlings nesting in the hollows of sycamore and oak trees, Robbins nesting in a dogwood and a mulberry tree, and the ever messy Black Phoebe on the back porch in a nest they made of mud. All of the birds are frantically feeding their chicks. The Phoebe's are especially busy as the two babies are just about too big to fit in the nest at this point... and seem to require more and more food. The geese have their babies, too, and are often seen down in the creek. And, the turkeys are "strutting their stuff".

The Spring Run Chinook salmon count as of mid-April was 4000. The salmon are counted at the Durham Mutual Dam by California Fish and Game. Let's hope this summer will not be as hot so most of the salmon can survive to spawn in October.

It seems like the rattlesnakes are out a little earlier this year. We've had two in our yard already, discovered by our 12 month old dog. She seems to sense that they're dangerous, and barks and growls at them, but it is still a concern.

CANYON DOCUMENTARIES

Since September, Walt Schafer has worked with two Chico State interns to produce two new media documents: an 8-minute mini-documentary video on Phase 1 of the Covered Bridge Rebuild, and a 32-minute video containing interviews with five canyon resident about their experiences during and after the Camp Fire. Both will soon be available to watch at the Colman Museum. Meanwhile, you can now view them at YouTube.com. Search for 1) Rebuilding The Honey Run Covered Bridge—Phase 1, and 2) Camp Fire Interviews: Butte Creek Canyon Perspectives.



August 2021 | Valley's Edge Specific Plan | City of Chico Website

VALLEY'S EDGE DEVELOPMENT

In March, Bill Brouhard, representing the proposed Valley's Edge Development which would border lower Honeyrun Road, Bruce Road and 20th Street, shared details of the proposed residential development. Valley's Edge would include up to 3000 homes at the bottom of the canyon. On April 12th, Smart Growth Advocates, a local environmental group, shared information regarding the proposed development and gave examples of the impact the development might have on Butte Creek Canyon and nearby communities.

More information can be found at:
<https://www.chicoer.com/2022/05/11/chicos-plan-to-grow-at-valleys-edge-would-add-2777-residential-units>

FIRST AID CLASS

The first aid class held at the schoolhouse in April was well attended and a nice opportunity to review, or be introduced to, basic first aid and CPR. Thank you to Mary Mansfield for teaching the class to many interested canyon residents.

Butte Creek Canyon



Honey Run Covered Bridge ■ Colman Museum ■ Centerville Schoolhouse

CHRA is truly grateful for the generous support of our sponsors.



"A Passion Driven Business"

SCHERBA MEDIA
1.530.520.9289
Luke@SCHERBAMEDIA.COM

scherbamedia



CTS

CANYON TRACTOR AND BACKHOE SERVICE
Serving all of Butte Creek Canyon
Cheaper & easier than renting a tractor
Reasonable Rates
Call Mike Clifford for more information
707-508-5817.Cell
mclifford@aol.com

BUTTE CREEK CANYON SPECIALIST

Michael J. Clifford
Broker Associate
CalRE #00905577



Chico Area Team

O. 530.898.0299
C. 707.508.5817

michaeljclifford5@gmail.com
13097 Bean Flat Road • Chico, CA 95928

Friends of Butte Creek
www.buttecreek.org

*Working to save the last,
best run of the spring run
Chinook salmon in
California.*



Printing: 12/2004 and 04/2005 with 400-400-8117
ENTERPRISE-RECORD

Public Benefit Charity 501(c)(3) Non-Profit Corporations. All donations are tax deductible. CRHA 13548 Centerville Rd. Chico, CA
Museum Website: CentervilleMuseum.com **Bridge Website:** hrcoveredbridge.org
Phone: (530) 893-9667 **Facebook:** @Centerville Schoolhouse @HRCBA



Butte Creek Canyon Volunteer Fire Company 26



MEDICAL CALLS

by Bob Fracoli

While calling 911 for a medical emergency is often unexpected, there are things you can do to prepare yourself and greatly aid the responders, and thus improve your care.

When calling 911: Don't wait to call; depending on the issue, time may be critical and it takes responders extra time to reach you in a remote area. Tell the 911 operator you have a medical emergency; they will transfer the call to the CAL FIRE Emergency Command Center. Be patient and wait for the call taker to ask questions. The first thing they will want is your address, followed by your phone number and name. They then will ask a series of questions. It's much quicker and more efficient if you allow them to complete their process. Be prepared to give instructions of how to find your home or location.

Remember, reflective address number signs and reflective street name signs for private roads are invaluable and help responders avoid wasting precious time trying to locate you.

What to expect: When you call 911 for a medical issue, a fire engine and ambulance will be sent. Additionally, the Butte Creek Canyon volunteer fire company will be alerted and members will respond if they are available.

While waiting for responders: Be sure to secure pets. Keep the patient calm.

If they are able to move, help the patient to the area near the entry door so it is easier for responders to access them. Unlock door and open any gates, if possible. Turn on outdoor lights if it is dark. If your home or location is difficult to find and someone is available, have that person move to a position to guide in responders. Gather the patient's medication containers and place them in a zip-lock type bag. If you prepare a list of medications in advance, be sure to include the correct spelling of the medication, the dose, how often it is taken and the prescribing doctor's name. Also note any allergies the patient has to medications.

When responders arrive: Provide a brief medical history for the patient, including what the symptoms are, when they began and anything that was taken for them. Include any relevant related medical history.

What to bring to the hospital: If the patient is transported by ambulance to the hospital, it's important that they bring their driver license or ID. This enables the hospital to quickly and accurately access their medical information and history. A cell phone and insurance cards may be helpful if available. Don't bring valuables.

When you know what is needed and are prepared in advance of an emergency, the process will be more efficient and we will be able serve you better.